



# **ALBUQUERQUE FIRE RESCUE**

**CADET APPLICANT**

**PRACTICE EXAM**

## Introduction

This practice exam is designed to help you prepare for the Albuquerque Fire Rescue (AFR) Cadet Written Exam. The practice exam consists of sample questions which will help you become more familiar with the types of questions that are contained on the actual exam. It is highly recommended that you review the Albuquerque Fire Rescue Applicant Study Guide in addition to taking this practice exam.

Do not attempt to memorize the practice questions and answers. Sample questions on the practice exam will not appear on the actual exam. During the actual examination, you will be given scratch paper to make notes and do calculations. You may wish to have a piece of scratch paper while you take the practice exam.

You will not be able to use a calculator on the actual exam, so it is recommended that you do not use one while taking this practice exam. In addition, to effectively take the first section of this practice exam, you will need someone else to read a passage to you.

It is best to take this practice exam in an environment that is quiet and free of distractions. An answer sheet has been provided for you on the next page so that you can record your answers for the practice test. Choose the best or most correct answer and mark it on the answer sheet. There is only one correct answer for each question. An answer key has been provided at the end of the exam so that you can check your answers when you have completed the exam.



## AFR PRACTICE EXAM ANSWER SHEET

1.    Ⓐ Ⓑ Ⓒ Ⓓ Ⓔ
2.    Ⓐ Ⓑ Ⓒ Ⓓ Ⓔ
3.    Ⓐ Ⓑ Ⓒ Ⓓ Ⓔ
4.    Ⓐ Ⓑ Ⓒ Ⓓ Ⓔ
5.    Ⓐ Ⓑ Ⓒ Ⓓ Ⓔ
6.    Ⓐ Ⓑ Ⓒ Ⓓ Ⓔ
7.    Ⓐ Ⓑ Ⓒ Ⓓ Ⓔ
8.    Ⓐ Ⓑ Ⓒ Ⓓ Ⓔ
9.    Ⓐ Ⓑ Ⓒ Ⓓ Ⓔ
10.   Ⓐ Ⓑ Ⓒ Ⓓ Ⓔ
11.   Ⓐ Ⓑ Ⓒ Ⓓ Ⓔ
12.   Ⓐ Ⓑ Ⓒ Ⓓ Ⓔ
13.   Ⓐ Ⓑ Ⓒ Ⓓ Ⓔ
14.   Ⓐ Ⓑ Ⓒ Ⓓ Ⓔ
15.   Ⓐ Ⓑ Ⓒ Ⓓ Ⓔ
16.   Ⓐ Ⓑ Ⓒ Ⓓ Ⓔ
17.   Ⓐ Ⓑ Ⓒ Ⓓ Ⓔ
18.   Ⓐ Ⓑ Ⓒ Ⓓ Ⓔ
19.   Ⓐ Ⓑ Ⓒ Ⓓ Ⓔ
20.   Ⓐ Ⓑ Ⓒ Ⓓ Ⓔ
21.   Ⓐ Ⓑ Ⓒ Ⓓ Ⓔ
22.   Ⓐ Ⓑ Ⓒ Ⓓ Ⓔ
23.   Ⓐ Ⓑ Ⓒ Ⓓ Ⓔ
24.   Ⓐ Ⓑ Ⓒ Ⓓ Ⓔ
25.   Ⓐ Ⓑ Ⓒ Ⓓ Ⓔ
26.   Ⓐ Ⓑ Ⓒ Ⓓ Ⓔ
27.   Ⓐ Ⓑ Ⓒ Ⓓ Ⓔ
28.   Ⓐ Ⓑ Ⓒ Ⓓ Ⓔ
29.   Ⓐ Ⓑ Ⓒ Ⓓ Ⓔ
30.   Ⓐ Ⓑ Ⓒ Ⓓ Ⓔ
31.   Ⓐ Ⓑ Ⓒ Ⓓ Ⓔ
32.   Ⓐ Ⓑ Ⓒ Ⓓ Ⓔ
33.   Ⓐ Ⓑ Ⓒ Ⓓ Ⓔ
34.   Ⓐ Ⓑ Ⓒ Ⓓ Ⓔ
35.   Ⓐ Ⓑ Ⓒ Ⓓ Ⓔ
36.   Ⓐ Ⓑ Ⓒ Ⓓ Ⓔ
37.   Ⓐ Ⓑ Ⓒ Ⓓ Ⓔ
38.   Ⓐ Ⓑ Ⓒ Ⓓ Ⓔ
39.   Ⓐ Ⓑ Ⓒ Ⓓ Ⓔ
40.   Ⓐ Ⓑ Ⓒ Ⓓ Ⓔ
41.   Ⓐ Ⓑ Ⓒ Ⓓ Ⓔ
42.   Ⓐ Ⓑ Ⓒ Ⓓ Ⓔ
43.   Ⓐ Ⓑ Ⓒ Ⓓ Ⓔ
44.   Ⓐ Ⓑ Ⓒ Ⓓ Ⓔ
45.   Ⓐ Ⓑ Ⓒ Ⓓ Ⓔ
46.   Ⓐ Ⓑ Ⓒ Ⓓ Ⓔ
47.   Ⓐ Ⓑ Ⓒ Ⓓ Ⓔ
48.   Ⓐ Ⓑ Ⓒ Ⓓ Ⓔ
49.   Ⓐ Ⓑ Ⓒ Ⓓ Ⓔ
50.   Ⓐ Ⓑ Ⓒ Ⓓ Ⓔ

## Listening Comprehension

For this portion of the practice exam, you will need someone to read the following passage to you. After listening to the passage one time, answer the questions. Do not take notes while the passage is being read to you. It is recommended that you attempt to answer the questions for each passage within thirty seconds.

**Note:** During the actual exam, you will be listening to recorded passages played over a speaker system. The passages will only be played one time. You will then be asked to answer a set of questions related to each passage within a specified amount of time. You will not be able to take notes during this portion of the actual examination.

### Passage 1

Albuquerque Fire Rescue responded to just under 110,000 calls in 2018, making us the 30th busiest fire department in the country. Over one-third of the department's fire stations require firefighters with specialized training. This includes our five Wildland Task Force stations, two Hazardous Materials Task Force stations, and the Technical Rescue Task Force station. Whether it's a medical emergency at your home or at your place of work, a lost hiker in the foothills or a child swept down arroyo from a flash flood, we are ready to respond. Our firefighters are trained to handle hazardous materials spills and leaks, confined space rescues, vehicle extrication, and rope rescues. A bosque fire threatening homes or a raging structure fire with people still inside, it is the members of Albuquerque Fire Rescue who respond. We are the all-hazards response agency for this community. Saving lives and protecting property is what we do...we are firefighters, and we never stop!

1. How many stations does Albuquerque Fire Rescue have?
  - A. 5
  - B. 8
  - C. 30
  - D. This information was not provided.
  
2. Which of the following is NOT a type of task force mentioned in the passage?
  - A. Technical Rescue
  - B. Wildland
  - C. Flash Flood
  - D. Hazardous Materials

## Passage 2

The Fire Academy serves to assess and coordinate all new technical information distributed to Albuquerque Fire Rescue personnel. It tests new equipment and procedures, and it also facilitates fire company and individual performance evaluations. In addition, the Fire Academy oversees the Safety, Technical Rescue, Hazardous Materials, EMS and Wildland Training Programs.

The Cadet Training Program provides cadets with the knowledge, skills, and abilities needed to become a firefighter and EMT. The Cadet Training Program exceeds requirements for Firefighter 1 and 2 certifications.

The 18-week Cadet Program follows a Paramilitary Command Structure and consists of daily, rigorous structured physical training and instruction. Starting from day one, and throughout the cadet program, cadets are expected to meet the following physical and academic requirements:

1. Complete the 1.5 mile run in less than 12 minutes 10 seconds
2. Complete the Combat Challenge in less than 6 minutes
3. 20 push-ups
4. 5 pull-ups
5. 5 Dips
6. Ability to maintain a GPA of 80% or above

3. Which physical requirement must be completed in less than six minutes?

- A. 1.5 mile run
- B. 20 push-ups
- C. Combat Challenge
- D. 5 pull-ups

4. Which of the following is NOT a function of the Fire Academy?

- A. conducts rigorous physical training and instruction
- B. overseeing the Arson Training Program
- C. facilitating fire company and individual personnel evaluations
- D. assessing and coordinating new technical information distributed to personnel

## Basic Math

You may now use your scratch paper for any calculations or notes for the remainder of the practice exam. Remember – you will not be able to use a calculator on the actual exam, so it is recommended that you do not use one on the practice exam.

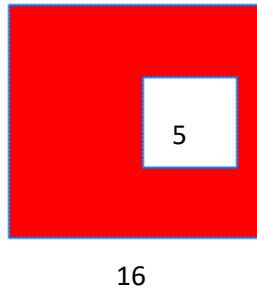
5. A length of rope is 50 feet long. When the rope got wet, it shrank by 10%. After the rope dried, it was stretched 5% longer than the wet length. How long is the stretched length of rope?

- A. 57.50 feet
- B. 55.00 feet
- C. 47.50 feet
- D. 47.25 feet \*

6. Solve the following problem:  $\frac{5}{7} \times \frac{1}{4}$

- A.  $\frac{6}{11}$
- B.  $\frac{5}{28}$
- C.  $\frac{7}{20}$
- D.  $\frac{20}{7}$

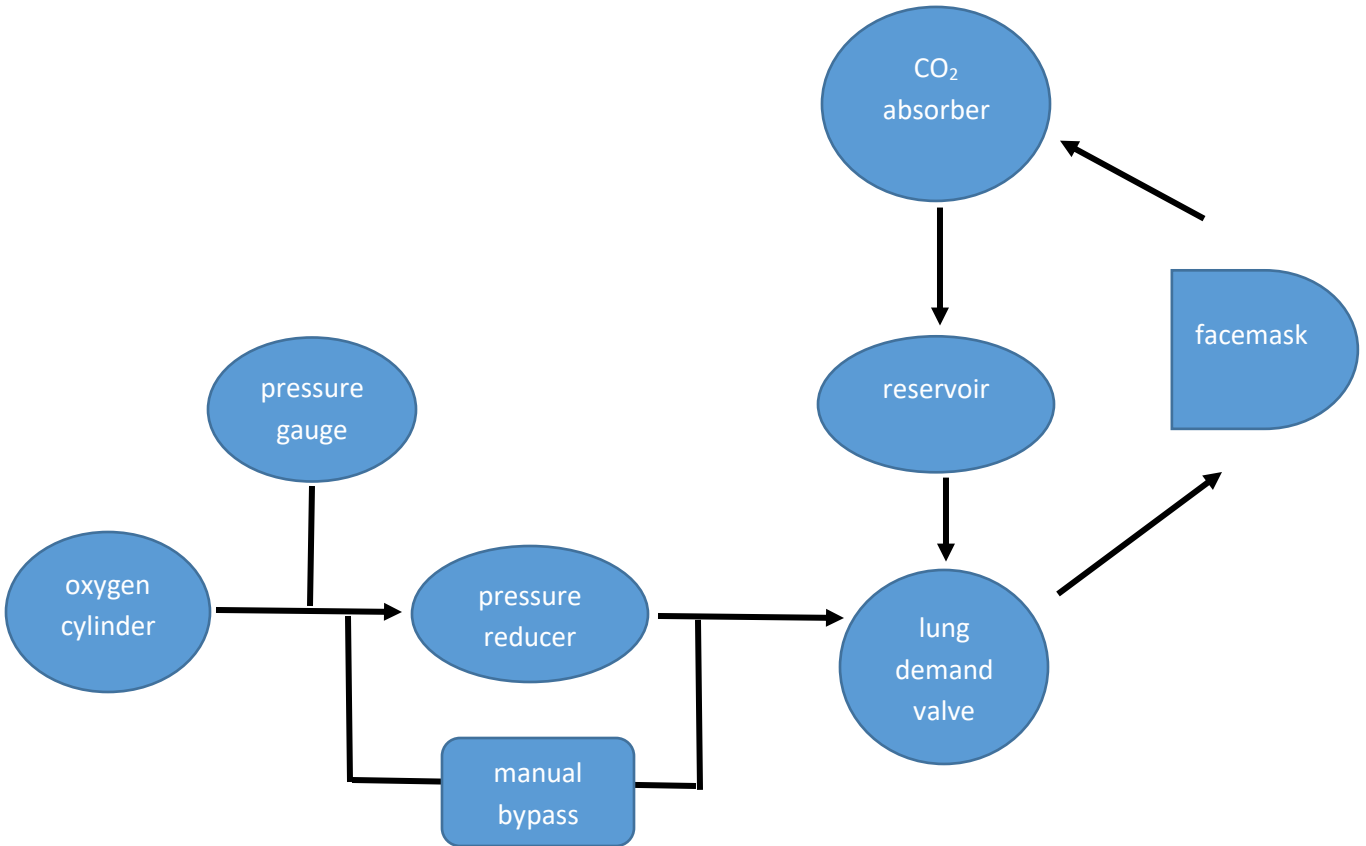
7. A smaller square is contained inside a larger square. The length of one side of the smaller square is 5 inches and the length of one side of the bigger square is 16 inches. What is the area of the shaded portion of the larger square?



- A. 462 inches<sup>2</sup>  
B. 281 inches<sup>2</sup>  
C. 231 inches<sup>2</sup>  
D. 181 inches<sup>2</sup>
8. Engine 4 is responding to a building fire traveling at 40 mph. The building is located 12 miles away from the station. How long would it take Engine 4 to reach the building?
- A. 12 minutes  
B. 18 minutes  
C. 28 minutes  
D. 30 minutes
9. A foundation wall is divided into segments based on the number of anchor bolts in the concrete. If a 25 foot wall is divided into 30 inch segments, how many segments does the wall have?
- A. 5  
B. 7  
C. 10  
D. 15

## Charts, Maps, and Diagrams

Look at the schematic diagram of a closed circuit self-contained breathing apparatus (SCBA) below, then answer the question.



10. After leaving the facemask, oxygen must go through the \_\_\_\_\_ to reach the reservoir.
- A. lung demand valve
  - B. pressure gauge
  - C. manual bypass
  - D. CO<sub>2</sub> absorber



Use the table below to answer the question.

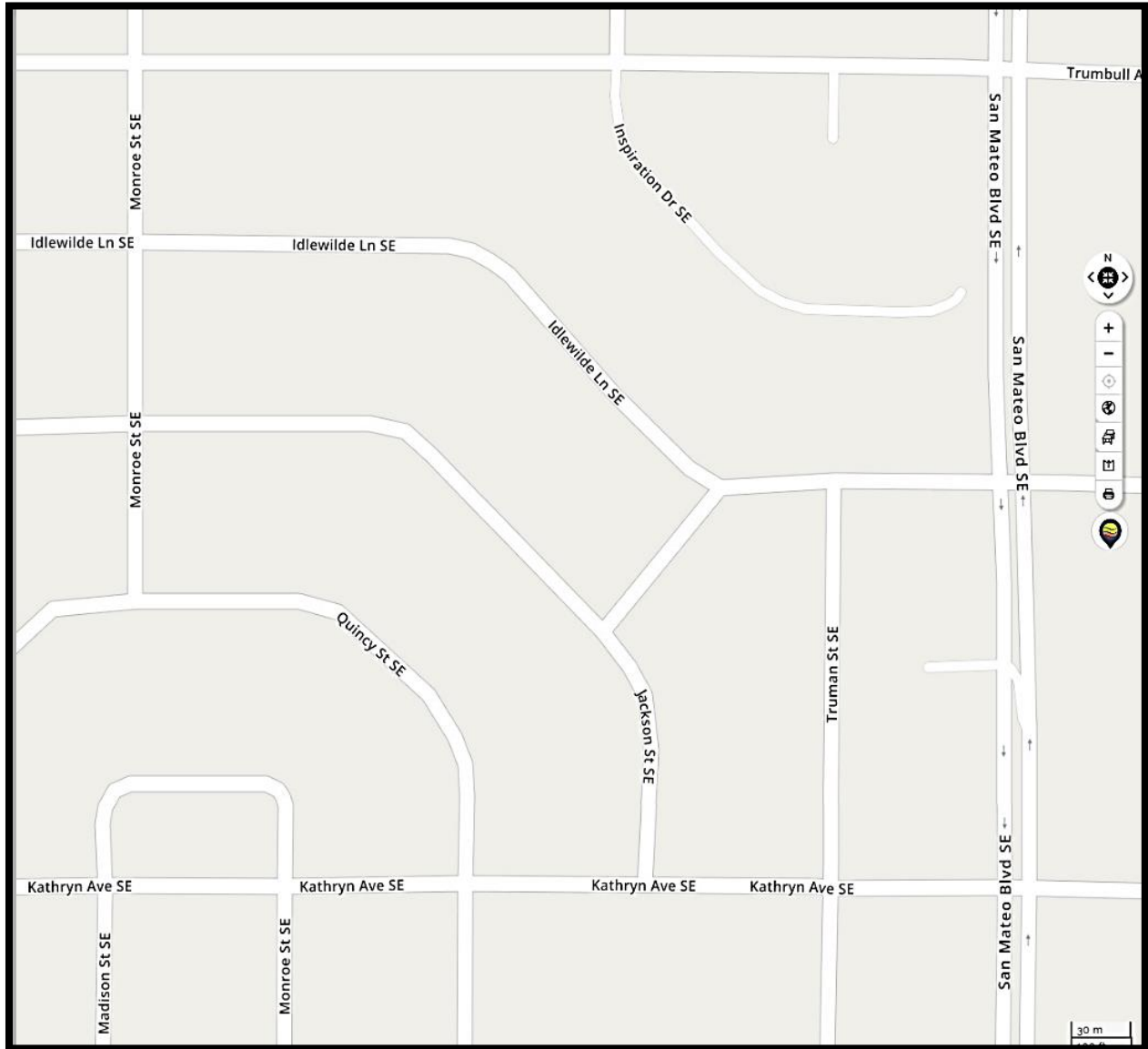
### Types of Ground Ladders

Ladder Type	Bedded Length	Number of Rungs	Total Working Height
14' Roofer	14'	11 Rungs	12'
24' Extension	14'	12 Rungs	22'
16' Roofer	16'	13 Rungs	14'
28' Extension	16'	14 Rungs	26'
18' Roofer	18'	15 Rungs	16'
45' Extension	19'	15 Rungs	43'
20' Roofer	20'	16 Rungs	18'
35' Extension	20'	17 Rungs	33'

11. Which two ladder types have the same bedded length?

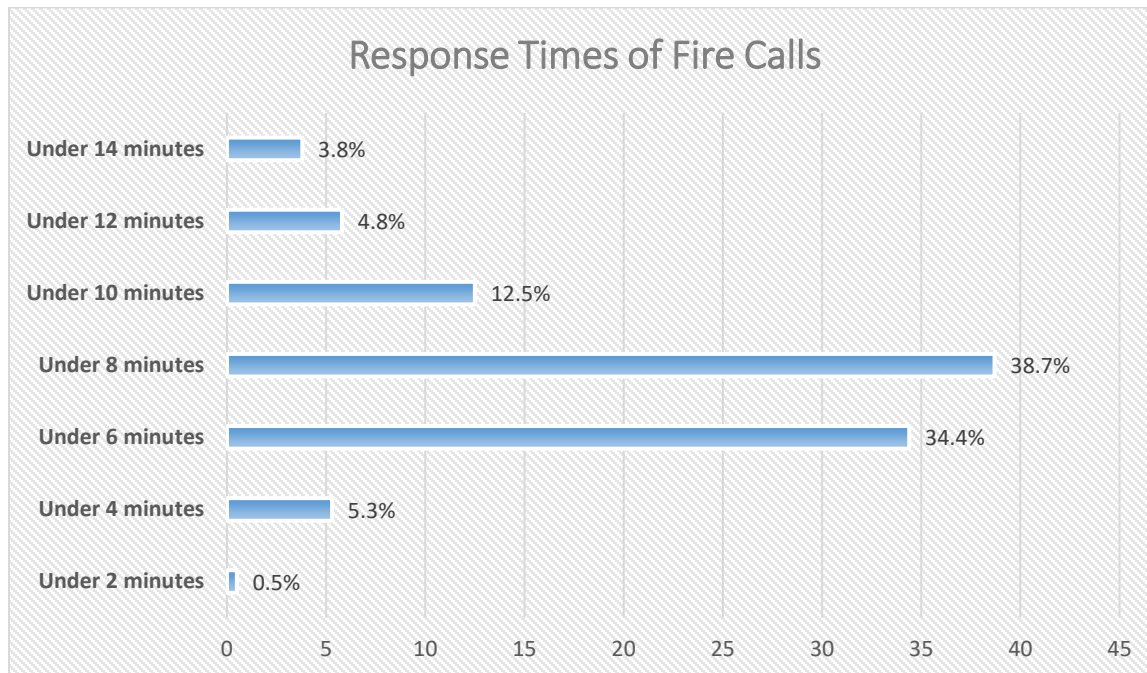
- A. 14' Roofer and 18' Roofer
- B. 35' Extension and 20' Roofer
- C. 24' Extension and 28' Extension
- D. 16' Roofer and 45' Extension

Use the map below to answer the question.



12. Station 45 is located at the corner of Kathryn Avenue SE and Madison Street SE. If Ladder 45 is dispatched to a fire at Idlewilde Lane SE and Monroe Street SE, what is the most direct route to the fire?
- A. Kathryn Ave., Truman St., Idlewilde Ln., Monroe St.
  - B. Kathryn Ave., Quincy St., Idlewilde Ln., Monroe St.
  - C. Kathryn Ave., Quincy St., Monroe St., Idlewilde Ln.
  - D. Kathryn Ave., Jackson St., Monroe St., Idlewilde Ln.

Use the graph below to answer the question.

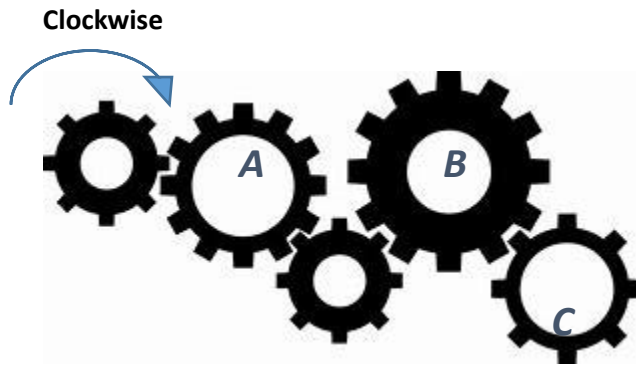


13. What is the combined percentage of all calls under ten minutes?

- A. 12.5
- B. 18.3
- C. 73.1
- D. 91.4

## Mechanical Reasoning

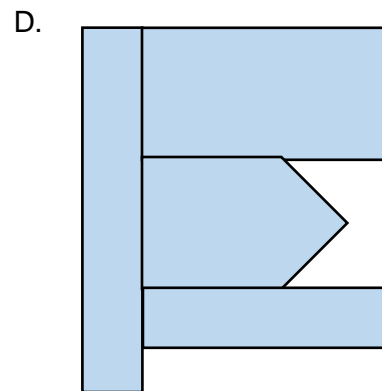
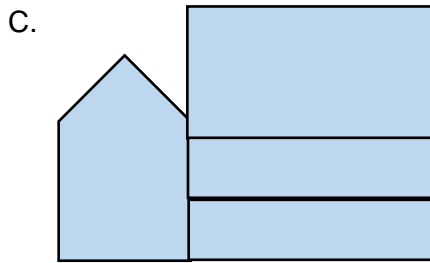
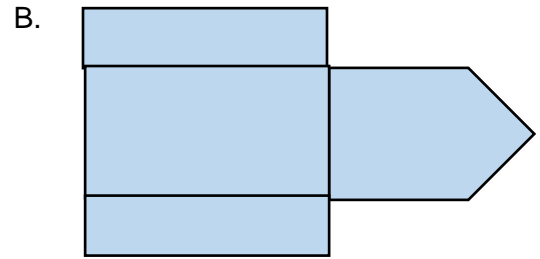
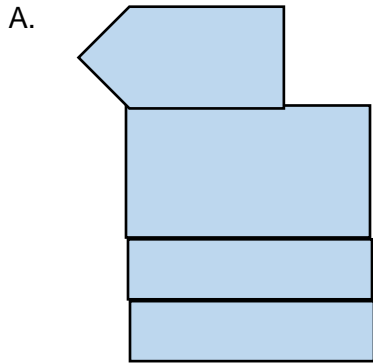
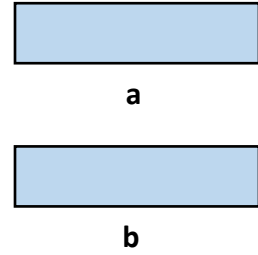
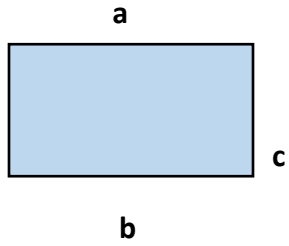
Look at the diagram below then answer the question.



14. Which gear is turning in the same direction as the first gear?
- A. A
  - B. B
  - C. C
  - D. none

15. Join all of the shapes together with the corresponding letters. Which shape results?

- A. A
- B. B\*
- C. C
- D. D



## Language Mechanics

Choose the set of words that best fits in the sentence blanks.

16. It is not \_\_\_\_\_ late for you \_\_\_\_\_ go get something to eat.
- A. to, too
  - B. too, to
  - C. to, two
  - D. to, too
17. For firefighters, \_\_\_\_\_ no higher priority \_\_\_\_\_ "Life Safety."
- A. there's, than
  - B. theirs, than
  - C. their's, then
  - D. there's then

The underlined parts of the sentence below are either correct or contain an error in grammar, spelling, punctuation, or word usage. There will be either one error or no errors in the sentence. For example, if the segment underlined "A" is wrong, select "A" for the answer on your answer sheet. If there is no error, select "E".

18. If an firefighter arrives on scene without proper personal protective equipment, rescue  
A B C  
could be delayed. No error  
D E
19. Firefighting apparatus are customized depending on the services they will be used for;  
A  
some apparatus is for fire suppression while others are used for emergency medical  
B C D  
services. No error  
E

20. Which of the following words is misspelled?

- A. injury
- B. vital
- C. recieve
- D. chronic

21. Which of the following words is misspelled?

- A. lieutenant
- B. signal
- C. wrench
- D. hydrent

## Reading Comprehension

**Directions:** Read the following passage then answer the questions. You may reread the passage as many times as you like.

Albuquerque Fire Rescue is one of the only fire departments in the country with uniformed firefighters assigned to receive and dispatch 911 calls. There is a total of twenty-seven Dispatchers assigned to our Alarm Room working on four separate shifts. The minimum staffing for each shift is five Dispatchers (at the rank of Driver) and one supervisor (at the rank of Lieutenant). Having our uniformed Dispatchers provides an advanced level of service to the community. The person answering the 911 call and assisting the caller has real-world experience as a firefighter. The Dispatchers also monitor each of our emergency scene incidents, including structure fires, to ensure our firefighters are safe.

The Fire Investigations Division is made up of eight firefighters and one civilian. Each fire investigator receives their law enforcement certification and additional training through the National Fire Academy. The Fire Investigations Division Captain, one Lieutenant and civilian administrative assistant work four 10-hour days. The other six Arson Investigators work a 48/96 shift, with one Lieutenant and one Driver on A, B, and C-Shift. The minimum staffing for the 48/96 shift is at least one Fire Investigator. We also have an accelerant detection canine assigned to one of our Fire Investigators.

Our Fire Marshal's Office (FMO) is responsible for the implementation, administration, and enforcement of the City of Albuquerque's Fire Code (Ordinance 0-2017-020) – which incorporates the International Fire Code (2015 edition), and the NFPA 101 Life Safety Code (2015 edition), along with some local amendments. The Fire Marshal is appointed by the Fire Chief and manages a program that consists of twenty-seven uniformed firefighters and two civilian employees. The Plans Checking Division within FMO is responsible for document review, approval, and inspection of all commercial construction and building alterations. The division will also review plans and conduct inspections on all installed or modified fire protection systems. We have the largest FMO in the state and are working on expanding this division.

H.E.A.R.T. (Home Engagement & Alternative Response Team) is the name of the AFR Community EMS Program. This program has two Paramedic Drivers, two Paramedic Lieutenants and one Paramedic Captain operating on a 40-hour work week. The goals of the HEART program are to identify repeat patients and connect them to appropriate medical and social services to help reduce the reliance on 911, fall prevention, and harm reduction related to opiate overdoses.

22. How many shifts are there in the Alarm Room?

- A. 3
- B. 4
- C. 5
- D. 8



23. Which of the following is NOT a function of the Plans Checking Division?
- A. document review
  - B. inspection of commercial construction
  - C. approval of building alterations
  - D. enforcement of the Fire Code
24. What is the benefit of having uniformed Dispatchers?
- A. They can assist in other divisions as needed.
  - B. They are used to working different shifts.
  - C. They have real-world experience as firefighters.
  - D. They have received advanced dispatch training.
25. What is the minimum staffing for a 48/96 shift within the Fire Investigations Division?
- A. one Fire Investigator
  - B. eight Firefighters and one civilian
  - C. one Lieutenant and one Driver
  - D. one Captain, one Lieutenant and one civilian administrative assistant

**This concludes the AFR Cadet Practice Examination. The answer key for the practice exam is on the next page.**

## ANSWER KEY

1. D
2. C
3. C
4. B
5. D
6. B
7. C
8. B
9. C
10. D
11. B
12. C
13. D
14. C
15. B
16. B
17. A
18. A
19. B
20. C
21. D
22. B
23. D
24. C
25. A

## **Conclusion**

Remember, this is only a practice exam and is not a comprehensive representation of the types of questions on the actual exam. The questions are samples of cognitive elements that you may encounter on the actual exam; it is important that you study additional material relating to the sections of the practice exam.

Best of luck on your journey to becoming a Firefighter with Albuquerque Fire Rescue!